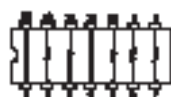
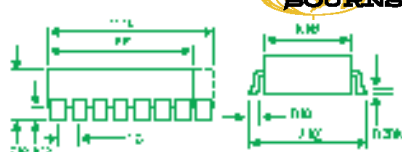


Thick Film Networks — continued

Surface Mount – Moulded Dual In-Line



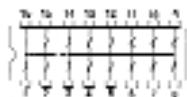
SMD



4814P-T01
(7 resistors, 14 pins)



4816P-T01
(8 resistors, 16 pins)



4816P-T02
(15 resistors, 16 pins)

● Pin 1 indicator

Surface mount thick film resistor networks having 7 and 8 isolated resistors or 15 bussed resistors of equal value. Laser marked on a gold epoxy coating for permanent identification. Compatible with automatic placement equipment and all popular soldering techniques.

Power rating @ 70°C		Resistance T.C. tracking	±50ppm/°C
4814P series	1.12W	Voltage rating	50V dc
4816P series	1.28W	Resistance T.C.	±100ppm/°C
Resistance tolerance	±2%	Insulation resistance	10MΩ min
		Operating temperature	-55°C to +125°C

Stocked in the following OHMIC Values:

4814P-T01					
33R = 477-412	220R = 477-436	1K = 477-450	4K7 = 477-473		
100R = 477-424	470R = 477-448	2K2 = 477-461	10K = 477-485		
4816P-T01					
10R = 452-300	220R = 107-079	2K2 = 107-082	47K = 107-085		
33R = 452-312	470R = 107-080	4K7 = 107-083	100K = 107-086		
100R = 107-078	1K = 107-081	10K = 107-084	1M = 471-756		
4816P-T02					
100R = 477-503	470R = 477-527	2K2 = 477-540	10K = 477-564	100K = 477-588	
220R = 477-515	1K = 477-539	4K7 = 477-552	47K = 477-576	1M = 477-590	

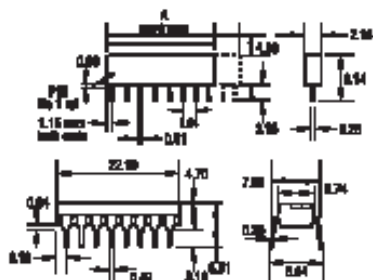
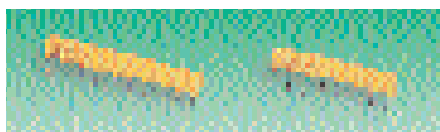
RP145

Order Multiple=5

Style	Order Code	5+	50+	100+	500+	1000+
4814P-T01	All Values					
4816P-T01	All Values					
4816P-T02	All Values					

SIL and DIL Dual Terminators

220R/330R



SIL 4608X (12 resistors)
6 line terminator
A max = 19.92



SIL 4610X (16 resistors)
8 line terminator
A max = 25.0



DIL 4116R-003 (28 resistors)
14 line terminator

SIL and DIL 220R/330R resistor networks for terminating logic circuits, pulse shaping, etc. Laser marked on a gold epoxy coating for permanent identification.

Power rating @ 70°C	SIL: 0.2W per resistor DIL: 0.125W per resistor	R1/R2	220R/330R
Resistance T.C.	±100 ppm/°C	Voltage rating	100V dc
Resistance T.C. tracking	±50 ppm/°C	Insulation resistance	10MΩ min
		Operating temperature	-55°C to +125°C

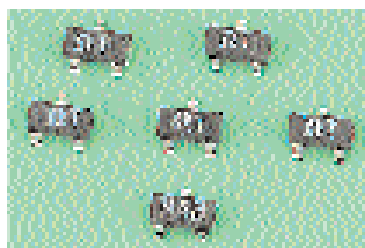
RP108

Order Multiple=5

Style	Order Code	5+	25+	100+	500+	1000+
8 pin SIL, 12 resistors	106-465					
10 pin SIL, 16 resistors	106-466					
16 pin DIL, 28 resistors	106-467					

Thin Film Precision Dividers

MPM Series - SOT23 Package Surface Mount



- Precision thin film dividers for gain defining applications
- Low TCR
- Close ratio tolerances

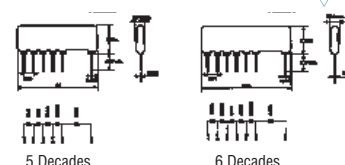
Power rating @ 70°C	100mW per resistor 250mW per package	TCR ratio	±2ppm/°C
Operating temperature	-55°C to +125°C	Ratio tolerance	±0.05%
		Maximum voltage	100V d.c.

RP253

Ratio	Resistance Values	Order Code	1+	5+	10+	25+	50+
100:1	100K/1K	309-8552					
50:1	50K/1K	309-8564					
25:1	25K/1K	309-8576					
20:1	20K/1K	309-8588					
10:1	10K/1K	309-8590					
5:1	5K/1K	309-8606					
2:1	2K/1K	309-8618					
1:1	500R/500R	309-8631					
1:1	1K/1K	309-8620					
1:1	10K/10K	309-8643					

Thin Film Precision Voltage Divider Networks

CNS471 Series - 5 & 6 Decades



- High stability nichrome thin film technology
- Compact SIL package
- Close tolerance, low TCR
- High voltage

Divder values		Voltage coefficient	±0.002ppm/V
5 decades	9M/900K/90K/9K/1K	TCR ratio	±2.5ppm/°C
6 decades	9M/900K/90K/9K/900R/100R	Ratio tolerance	±0.03%
Voltage rating	1200V		

RP252

Style	Order Code	1+	5+	10+	25+	50+
5 Decades	309-8539					
6 Decades	309-8540					

Resistor Arrays

0804 Case Size



- Four surface mount resistors on one 0804 package



L = 2 W = 1 H = 0.5
Supplied on tape (reel = 5Kpcs)

Power rating	0.063W	Maximum Voltage	50V a.c./d.c.
Resistance tolerance	5%	Climatic category (IEC68)	55/125/56

Stocked in the following OHMIC values

0R0 = 325-7290	100R = 325-7368	1K5 = 325-7435	22K = 325-7502	330K = 325-7575
10R = 325-7307	150R = 325-7370	2K2 = 325-7447	33K = 325-7514	470K = 325-7587
15R = 325-7319	220R = 325-7381	3K3 = 325-7459	47K = 325-7526	680K = 325-7599
22R = 325-7320	330R = 325-7393	4K7 = 325-7460	68K = 325-7538	1M = 325-7605
33R = 325-7332	470R = 325-7400	6K8 = 325-7472	100K = 325-7540	
47R = 325-7344	680R = 325-7411	10K = 325-7484	150K = 325-7551	
68R = 325-7356	1K = 325-7423	15K = 325-7496	220K = 325-7563	

RP312

Order Multiple=10

Style	Order Code	10+	50+	100+	1000+	5000+
ARV 341	All Values					