

Wedge Base 10mm, T3¼



Nylon moulding with phosphor bronze contacts and integral ½ wave rectifier diode. Leadwires connection by insulation displacement method.

L = 23.0 overall, Panel Dia. = 13.3

FOR SUITABLE 10mm, T3¼ WEDGE BASE FILAMENT LAMPS, SEE **PAGE 266**

OPT274X

Order Multiple=5	Order Code	5+	Price Each	100+	500+
	.527-087				

Insulating Terminal Cover



A moulded insulating terminal cover designed to fit C1090 Series of signal lampholders.

L = 58.4
Dia = 17.8 max

IND40X

Order Multiple=5	Order Code	5+	Price Each	100+	250+	500+
	140-294					



PCB Lampholders

Bi-Pin T1¼

SCI/VCH



Gold flashed Beryllium Copper contacts.

Pin Spacing	Pin Dia.	Body Dia.	Material	Mfrs. List No.
3.18	0.89	5.46	Nylon	4999-004

FOR SUITABLE T1¼ BI-PIN FILAMENT LAMPS SEE **PAGE 268**

OPT272X

Order Code	1+	Price Each	100+	500+
527-002				

Wedge Base 10mm, T3¼

SLI/VCH



L = 19.6 overall
Dia = 15.1 overall

Polycarbonate moulding with Tin-plated spring bronze contacts. PCB or panel mounting.

Mfrs. List No. LH10

FOR SUITABLE WEDGE BASE 10mm, T3¼ FILAMENT LAMPS SEE **PAGE 266**

OPT270X

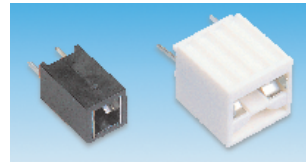
Order Multiple=5	Order Code	5+	Price Each	100+	500+
	.527-063				



Panel Cut-out

Wedge Base T1½ and T3¼

SLI/VCH



T1½: H = 7.4, W = 7.4, T3¼: H = 12, W = 12,
L = 17.2 overall. L = 17.9 overall.

Tin plated spring bronze contacts directly soldered onto PCB. T1½ and T3¼ also suitable for panel and lug mounting respectively.

	Material	Mfrs. List No.	Order Code
T1½, 5mm	Polycarbonate	LH3	527-099
T3¼, 10mm	Malcolon	LH12	527-075

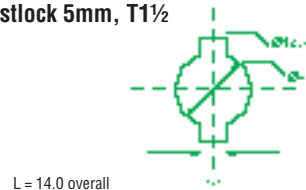
FOR SUITABLE WEDGE BASE T1½ & T3¼ FILAMENT LAMPS SEE **PAGE 266**

OPT271X

Order Multiple=5	Order Code	5+	Price Each	100+	500+
T1½	.527-099				
T3¼	.527-075				

Wedge Base Twistlock 5mm, T1½

SLI/VCH



L = 14.0 overall
Dia. = 12.5 overall

Panel Cut-out

Thermoplastic moulding with 20% glass fibre. Tin-plated spring steel contacts connected to PCB by double contact made from either side. PCB thickness 1.5mm.

Mfrs. List No. TR4000

FOR SUITABLE WEDGE BASE 5mm, T1½ FILAMENT LAMP SEE **PAGE 266**

OPT273X

Order Code	1+	Price Each	50+	100+
.527-038				

MES Lamp Holders



599-190
H = 19,
Dia = 30

599-207
H = 12, Dia. = 10

Holders for MES type bulbs available for either cross-head screw or solder tag connection. The screw connection version has a white base with two mounting holes (fixing centre 22mm).

OPT313X

10 Per Pack Type	Order Code	1+	Price Per Pack	10+	100+
Screw connection	599-190				
Solder tag connection	599-207				

continued

Free Technical Support

Our trained engineers are available to help you select the right item. Call us on (65) 788 1922 or e-mail singapore-technical@farnell.com we're here to help.