

Slot 1 Connector

Slot 1 connector and cartridge assembly

tyco / Electronics / ANSLEY



- Intel® approved for use with all Pentium II® based computers and work stations
- Lead in chamfers ease card insertion
- High Temperature insulator allows reflow soldering
- Staggered contact design reduces card insertion force
- CSA & UL certified

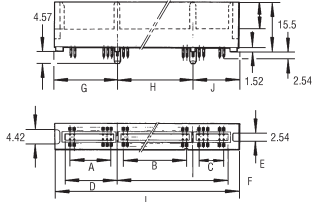
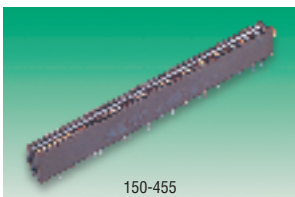
Connector:- Insulator material. Glass filled high temperature thermoplastic **UL94V-0**
 Contacts. High strength copper alloy
 Current rating. 1A per contact
 Operating temperature. -40°C to 105°C
 Cartridge assembly:- Material. Thermoplastic **UL94V-0**
 Screw & Nut material. Copper alloy

CS571

	Order Code	Price Each
Slot 1 Connector	321-7577	1+
Slot 1 Cartridge Assembly	321-7589	

Card Edge Connectors

Computerbus® 1.27mm Pitch High Density Double Sided



PCB drilling pattern viewed from component side of PCB

- High density card edge connector compatible with the requirements of new generation 16 and 32 bit personal computers
 - Terminated with PCB pins.
- Features: High density, offering increase in number of bus circuits with no loss of board space. High temperature housing, withstands flow soldering and maintains dimensional stability. Designed for robotic assembly registration posts, provide precise alignment.

Order Code	No of Contact Pairs			Dimensions									
	A	B	C	A	B	C	D	E	F	G	H	J	L
150-455	42	49	—	52.07	60.96	—	55.24	64.13	—	57.66	64.77	—	12.21
Proof voltage	500Vac			Housing		Black polyphenylene sulphide							
Current rating	1A			Contact material		Copper alloy							
Insulation resistance	1000MΩ			Contact finish		Contact area gold over palladium nickel							
Mating cycles	100			Mating force		1.7N							

Mfrs. List No. CEE2X91S3Z14 = 150-455

CS157

Double Sided	Order Code	Price Each
No of Ways		
91+91	150-455	1+ 15+ 30+ 60+ 120+

0.1" Pitch, Single Sided With Removable Plastic End Feet

McMurdo



- Polarising key
- Single sided, complete with mounting feet
- Solder tag pins

Working voltage 350V
 Current rating 3A dc or ac peak
 Housing Green, glass filled polyester
 Mating cycles 250

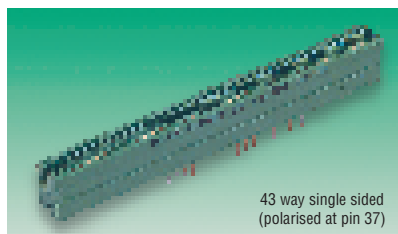
Mfrs. List No. CS3548F-EDGE = 965-820, CS3549F-EDGE = 965-832

CS158

Single Sided	Order Code	Price Each
No. of Ways		
32	.965-820	1+ 25+ 100+ 250+ 500+
40	.965-832	

0.1" Pitch Single Sided With Removable Metal End Feet

Cinch



43 way single sided (polarised at pin 37)

- Single sided complete with mounting feet and suitable for use with DIP boards
- Terminated in 6mm solder tag pins.

Mfrs. List No. B01000040000000 = 316-908

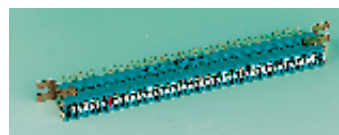
CS159

Single Sided	Order Code	Price Each
No. of Ways		
16	316-908	1+ 25+ 50+ 100+ 250+

0.1" Pitch 43 Way, Solder Tag Pins With Removable Metal End Feet

McMurdo

15



- Single and double edge version
- Removable end feet, solder tag pins
- Polarising key in position 37

Working voltage 350V
 Current rating 3A dc or ac peak
 Housing Green, glass filled polyester
 Mating cycles 250

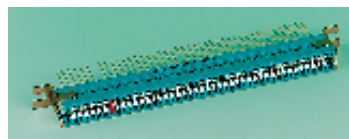
Mfrs. List No. CS3544F-EDGE = 965-844, CS3545E-EDGE = 965-856

CS160

	Order Code	Price Each
No. of Ways		
43 single sided	.965-844	1+ 25+ 100+ 250+ 500+
43 double sided	.965-856	

0.1" Pitch, Wire Wrap Pins With Removable Metal End Feet

McMurdo



- Single and double sided versions
- Removable end feet
- Polarised in position 37

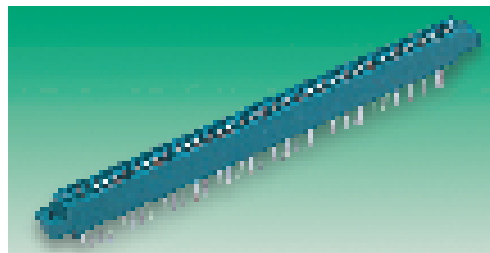
Working voltage 350V
 Current rating 3A dc or ac peak
 Housing White, glass filled polyester
 Mating cycles 250

Mfrs. List No. CS3546F-EDGE = 965-868, CS3547F-EDGE = 965-870

CS161

	Order Code	Price Each
No. of Ways		
43 single sided	.965-868	1+ 25+ 100+ 250+ 500+
43 double sided	.965-870	

0.125" Pitch Double Sided (S100)



- A 50 way double sided edge connector with 0.125" pitch gold inlay contacts suitable for S100 based system board
- The connector has pins (0.635mm sq 8.9mm) with 6.35mm row spacing
- Mounting holes 3.25mm diameter
- Current rating 3A

CS162

Double Sided	Order Code	Price Each
No. of Ways		
50+50	145-147	1+ 10+ 25+ 50+ 100+ 250+