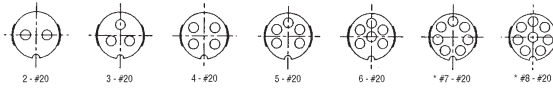
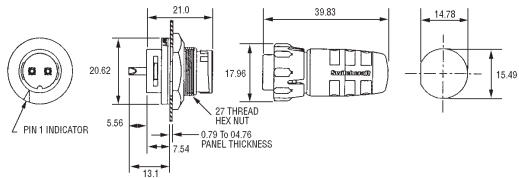
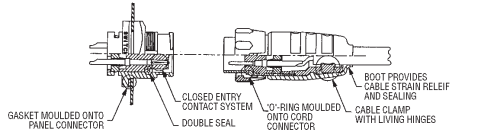


Sealed

'EN3' Weathertight Connectors – IP68

Switchcraft



7 and 8 pin not available in cord male and panel female

- Compact panel mount or cord connector
- Excellent moisture and chemical resistance
- IP68 rated
- Housing UL94V-0
- 2 to 8 pins
- Solder bucket or crimp contact version
- No grommets
- Low insertion force

Contact rating	7.5A @600Vr.m.s	Housing	Thermoplastic rubber
Contact resistance	3.1mΩ(max)	Contact	Copper alloy, gold or nickel plating
Insulation resistance	100MΩ@ 77°F	Termination	Solder bucket or crimp
Mating cycles	600 (minimum)	Cable dia.	5-7mm
Temperature range	-40°C to 65°C		

- NOTE:** 1) 7 and 8 pin not available in cord male and panel female
 2) Panel EN3 only mates with cord EN3
 3) Contacts supplied with crimp versions

FOR SUITABLE CRIMP TOOL SEE PAGE 278

CM349

No. of ways	Mfrs. List No.	Order Code	1+	10+	50+	100+
Free Plug - Solder bucket contacts						
2	EN3C2M	.726-990				
3	EN3C3M	.727-003				
4	EN3C4M	.727-015				
5	EN3C5M	.727-027				
6	EN3C6M	.727-039				
Free Socket - Solder bucket contacts						
2	EN3C2F	.727-040				
3	EN3C3F	.727-052				
4	EN3C4F	.727-064				
5	EN3C5F	.727-076				
6	EN3C6F	.727-088				
7	EN3C7F	.727-090				
8	EN3C8F	.727-106				
Panel Plug - Solder bucket contacts						
2	EN3P2M	.727-118				
3	EN3P3M	.727-120				
4	EN3P4M	.727-131				
5	EN3P5M	.727-143				
6	EN3P6M	.727-155				
7	EN3P7M	.727-167				
8	EN3P8M	.727-179				
Panel Socket - Solder bucket contacts						
2	EN3P2F	.727-180				
3	EN3P3F	.727-192				
4	EN3P4F	.727-209				
5	EN3P5F	.727-210				
6	EN3P6F	.727-222				

CM349AX

Mfrs. List No.	Order Code	1+	10+	50+	100+	
Free Plug - Crimp contact						
2	EN3C2MCK	.727-246				
3	EN3C3MCK	.727-258				
4	EN3C4MCK	.727-260				
5	EN3C5MCK	.727-271				
6	EN3C6MCK	.727-283				
Free Socket - Crimp contact						
2	EN3C2FCK	.727-295				
3	EN3C3FCK	.727-301				
4	EN3C4FCK	.727-313				
5	EN3C5FCK	.727-325				
6	EN3C6FCK	.727-337				
7	EN3C7FCK	.727-349				
8	EN3C8FCK	.727-350				
Panel Plug - Crimp contact						
2	EN3P2MCK	.727-362				
3	EN3P3MCK	.727-374				
4	EN3P4MCK	.727-386				
5	EN3P5MCK	.727-398				
6	EN3P6MCK	.727-404				
7	EN3P7MCK	.727-416				
8	EN3P8MCK	.727-428				
Panel Socket - Crimp contact						
2	EN3P2FCK	.727-430				
3	EN3P3FCK	.727-441				
4	EN3P4FCK	.727-453				
5	EN3P5FCK	.727-465				
6	EN3P6FCK	.727-477				
Sealing Cap	EN3CAP	.727-234				
Order Multiple=10						
Crimp Contacts						
Pins	EN3CC20M	.727-489	10+	100+	500+	1000+
Sockets	EN3CC20F	.727-490				
Order Multiple=1						
Crimp Tool	MH860	105-992.				
Insertion/	EN3INS20	658-625				
Extraction Tool						
Crimp Positioner	86-1S	658-637				

Miniature Water-Proof Circular Connector R04 Series



- Waterproof to 20M
 - Lightweight
- | | | | |
|------------|-----------------------------------|--------------------------|---------------------------|
| Shell | Brass & Zinc Alloy, Nickel Plated | Insulation resistance | 500V dc 1,000MΩ min |
| Contact | Copper Alloy, Gold Plated | Contact resistance | 3Vdc 8mΩ max |
| Insulation | PBT Resin to UL 94V-0 | Shock | 50G |
| | | Vibration | MIL-STD-202-201A |
| | | Moisture resistance | MIL-STD-202-103B |
| | | Corrosion | MIL-STD-202-101D |
| | | Temperature | -25 to +85°C |
| | | Withstand water pressure | 2kg/cm ² (atg) |

Mfrs. List No. Male cable plug R04-PxM, Female cable plug R04-PxF,
 Male cable jack R04-JxM, Female cable jack R04-JxF,
 Male panel receptacle R04-RxM,
 Female panel receptacle R04-RxF,
 Protective cap R04-CRx

Where x = No. of ways

CM481

No. of Ways	Order Code	1+	10+	25+	50+	100+	250+
Male Cable Plug							
3	307-3622						
5	307-3634						
8	307-3646						
12	307-3658						
Female Cable Plug							
3	307-3660						
5	307-3671						
8	307-3683						
12	307-3695						

continued