

## Cable Trunking Self-Adhesive



- Manufactured in high impact white PVC
- Double locking clip-on lid
- Self adhesive flows fast and permanent fixing to a dust and grease free surface



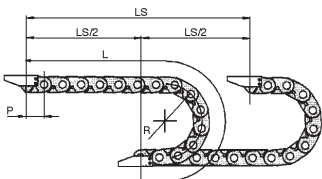
**Best Value**

SEC132

W	D	Lgth	No./ Pack	Mftrs. List No.	Order Code	Price Per Pack			
						1+	3+	8+	16+
<b>Self-Adhesive Trunking</b>									
10	8	3m	8	SA108	<b>586-160</b>				
16	12.5	3m	8	SA125.1	<b>.586-171</b>				
25	12.5	3m	8	SA125.2	<b>.586-183</b>				
20	10	3m	8	SA201	<b>.586-195</b>				
16	16	3m	6	SA1	<b>.586-201</b>				
25	16	3m	6	SA2	<b>.586-249</b>				
38	16	3m	4	SA3	<b>.586-213</b>				
38	25	3m	4	SA4	<b>.586-225</b>				
38	38	3m	4	SA5	<b>.586-237</b>				

## Chain Link Trunking

A range of light weight chain link trunking used to protect moving cables and hoses in a great variety of applications, such as machine tools, robotics, conveyors and warehouse systems. Made from nylon and resistant to sea water, ammonia, petrol and mineral oil, the chain is suitable for harsh, corrosive environments. Supplied in one metre lengths which can be modified by the removal of the connecting pivot pins.



Operating temperature -25°C to +125°C

To determine the length of the chain the following formula should be used.

$$L = \frac{LS}{2} + \pi R + 2P$$

where L = Length of chain R = Radius of curvature  
LS = Travel distance P = Pitch (1 link)

SEC231

## Open Link



- Protection for cables and hoses
- Ideal for machine tools, conveyor and warehouse systems
- Open link construction, cables are laid in after removing cover
- Link trunking resistant to water, petrol, oil, ammonia
- Brackets available attached to a link of trunking for quick and easy connection
- Light and secure, even at high speed

The bending radius of the chain must be greater than the bending radius of the cables/hoses. The cables/hoses should be placed separately rather than on top of one another. There should be 10% free space between cable/hose diameters and the internal dimensions of the chain. Install cables/hoses symmetrically within the chain, placing the larger and heavier ones towards the outside, and the smaller ones in the middle. ELP-DIA. 538000

External Dimensions			Internal Dimensions			Mftrs. List No.	Order Code
A	B	C	D	R	P		
54	30	30	24	50	35	SR305A/08	538-000
74	35	50	24	120	35	SR305/40	718-8730
62	35	40	25	75	40	SR400/41	718-8754
94	43	65	31	75	40	SR355A/065	538-024
124	43	95	31	200	40	SR355A/098	538-048
78	55	50	36	150	50	SR600/51	718-8778
128.6	55	50	36	150	50	SR600/101	718-8791

Ex Trunking Dimensions	Supplied Length	Order Code	Price Each			
			1+	10+	25+	50+
5 4 30	1m	<b>538-000</b>				
9 4 43	1m	<b>538-024</b>				
1 2 4 43	1m	<b>538-048</b>				

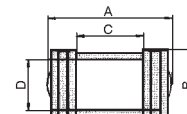
Ex Trunking Dimensions	Length	Order Code	Price Each			
			1+	5+	10+	25+ 50+
7 4 30	1m	<b>718-8730</b>				
6 2 35	1m	<b>718-8754</b>				
7 8 . 8 55	1m	<b>718-8778</b>				
1 2 8 . 6 55	1m	<b>718-8791</b>				

Brackets 2 per pack	Order Code	Price Each			
		1+	10+	25+	50+
5 4 30	<b>538-012</b>				
9 4 43	<b>538-036</b>				
1 2 4 43	<b>551-417</b>				

ele397

2 Per Pack		Order Code	Price Per Pack			
Mftrs. List No.			1+	5+	10+	25+ 50+
7 4 30	SR305A 40 Bkt	<b>718-8742</b>				
6 2 40	SR400 41 Bkt	<b>718-8766</b>				
7 8 . 8 55	SR600 51 Bkt	<b>718-8780</b>				
1 2 8 . 6 55	SR600 101 Bkt	<b>718-8808</b>				

## Closed Link



- Ideal for machine tools, conveyor and warehouse systems
- Closed link construction, cables are fed through centre
- Brackets available attached to a link of trunking for quick and easy connection
- Light and secure even at high speed

The bending radius of the chain must be greater than the bending radius of the cables/hoses. The cables/hoses should be placed separately rather than on top of one another. There should be 10% free space between cable/hose diameter and the internal dimensions of the chain. Install cables/hoses symmetrically within the chain, placing the larger and heavier ones towards the outside, and the smaller ones in the middle.

External Dimensions		Internal Dimensions		R	P	Order Code
A	B	C	D			
18	15	12	12	18	18	718-8584
18	15	12	40	40	18	537-901
23	22	15	18	40	30	537-925
29	23	14	17	80	30	718-8614
40	23	24	17	40	30	718-8638
52	30	309	20	50	35	537-949
91	45	65	30	75	40	537-962
121	45	95	30	200	40	537-986

ele512

External Trunking Dimension	Supplied Length	Order Code	Price Each			
			1+	10+	25+	50+
18x15	1m	<b>537-901</b>				
23x22	1m	<b>537-925</b>				
52x30	1m	<b>537-949</b>				
91x40	1m	<b>537-962</b>				
121x45	1m	<b>537-986</b>				

External Trunking Dimensions	Supplied Length	Order Code	Price Each			
			1+	5+	10+	25+
18x15	1m	<b>718-8584</b>				
29x23	1m	<b>718-8614</b>				
40x23	1m	<b>718-8638</b>				

Brackets 2 per pack	Order Code	Price Per Pack			
		1+	10+	25+	50+
18x15	<b>537-913</b>				
23x22	<b>537-937</b>				
52x30	<b>537-950</b>				
91x45	<b>537-974</b>				
121x45	<b>537-998</b>				

2 Per Pack		Order Code	Price Per Pack				
Brackets	Mftrs. List No.		1+	5+	10+	25+	50+
18x15	SR200 12 Bkt	<b>718-8596</b>					
29x23	SR300 16 Bkt	<b>718-8626</b>					
40 x 23	SR300 24 Bkt	<b>718-8640</b>					