

Prototyping Boards — continued

Spot Face Cutter



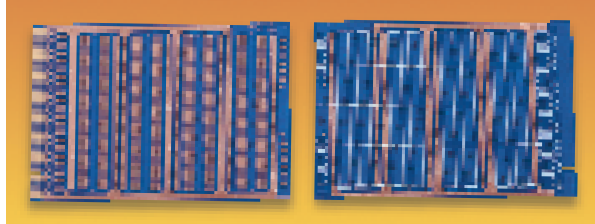
This cutter will remove the copper strips locally to make a copper break.

PCB4

| Order Code | Price Each | | | |
|------------|------------|-----|-----|-----|
| | 1+ | 10+ | 20+ | 30+ |
| .329-538 | | | | |

DIP Boards

Doubled-Sided Plug-in



Component side L = 165.1, W = 114.3

Wiring side

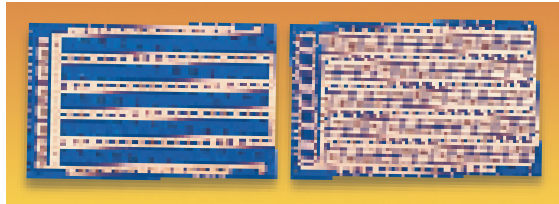
Up to 20 ICs can be mounted per card.

42 gold plated contacts, Matrix hole diameter 1mm, Connector fingers and DIP pads 1.9mm wide

PCB33

| Order Code | Price Each | | | |
|------------|------------|-----|-----|-----|
| | 1+ | 10+ | 20+ | 30+ |
| 147-904 | | | | |

Eurocard, Single Size (High Density)



Component side L = 160, W = 100

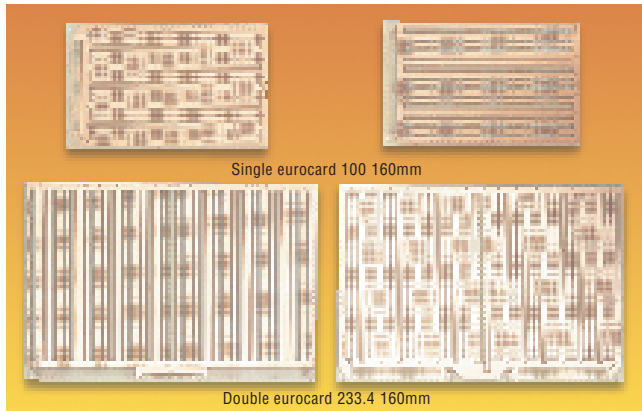
Wiring side

- Three plane high density board
- DIN41612 connector mounting holes at one end

PCB34

| Order Code | Price Each | | | |
|------------|------------|-----|-----|-----|
| | 1+ | 10+ | 20+ | 30+ |
| .147-905 | | | | |

Eurocard, Single and Double Size (High Density) ROADRUNNER



Single eurocard 100 160mm

Double eurocard 233.4 160mm

- Single and double size eurocard
- For use with Roadrunner, wire wrapping and hand wiring
- DIN41612 connector mounting holes at one end

FOR IBM PROTOTYPING BOARDS SEE PAGE 283

PCB35

| | Order Code | Price Each | |
|-------------------------------|------------|------------|----|
| | | 1+ | 5+ |
| Single eurocard | 145-230 | | |
| Double eurocard | 145-231 | | |
| Low cost SRBP Single eurocard | 967-385 | | |

Prototyping Boards – Eurocard

Eurocard Prototyping Boards

ROTH ELECTRONIK



Pad style W = 100, L = 160, Hole dia = 1.0 Strip style

- Versatile prototyping boards
- Two material types SRBP (synthetic resin bonded paper) or fibre glass
- Strip or pad styles

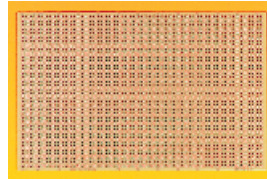
| Material | Track Type | Hole spacing | Hole type | Connector type | No. of Ways | Mfrs. List No. | Order Code |
|-------------|------------|--------------|-----------|----------------|-------------|----------------|------------|
| SRBP | Pad | 2.54 2.54 | DIN41612 | Type D | 32 | RE525HP | 804-502 |
| Fibre glass | Pad | 2.54 2.54 | DIN41612 | Type D | 32 | RE525EP | 804-514 |
| SRBP | Strip | 2.54 2.54 | DIN41612 | Type D | 32 | RE521HP | 804-812 |
| Fibre glass | Strip | 2.54 2.54 | DIN41612 | Type D | 32 | RE521EP | 804-824 |
| SRBP | Pad | 2.5 2.5 | DIN41617 | | 31 | RE120HP | 823-375 |
| SRBP | Pad | 2.54 2.54 | DIN41612 | Type C | 32/64/96 | RE320HP | 823-454 |
| Fibre glass | Pad | 2.54 2.54 | DIN41612 | Type C | 32/64/96 | RE320EP | 823-478 |
| Fibre glass | Pad | 2.54 2.54 | DIN41612 | Type C | 32/64/96 | RE60EP | 835-092 |
| SRBP | Pad | 2.54 2.54 | DIN41612 | Type C | 32/64/96 | RE60HP | 835-122 |

PCB131

| Mfrs. List No. | Order Code | Price Each | | | | |
|----------------|------------|------------|----|-----|-----|------|
| | | 1+ | 5+ | 10+ | 50+ | 100+ |
| RE525HP | 804-502 | | | | | |
| RE525EP | 804-514 | | | | | |
| RE521HP | 804-812 | | | | | |
| RE521EP | 804-824 | | | | | |
| RE120HP | 823-375 | | | | | |
| RE320HP | 823-454 | | | | | |
| RE320EP | 823-478 | | | | | |
| RE60EP | 835-092 | | | | | |
| RE60HP | 835-122 | | | | | |

Round Pad Eurocard

ROTH ELECTRONIK



- Round pad design, Eurocard size
- Two material types SRBP (synthetic resin bonded paper) or fibre glass

| Material | Hole spacing | Hole matrix | Size | Hole dia | Mfrs. List No. | Order Code |
|-------------|--------------|-------------|---------|----------|----------------|------------|
| SRBP | 2.54 2.54 | 38 61 | 100 160 | 1.0 | RE200HP | 823-417 |
| SRBP | 2.54 2.54 | 38 61 | 100 160 | 1.0 | RE200DS | 823-429 |
| Fibre glass | 2.54 2.54 | 38 61 | 100 160 | 1.0 | RE200 EPOXY | 823-430 |
| Fibre glass | 2.54 2.54 | 38 61 | 100 160 | 1.0 | RE200DS-EPOXY | 823-442 |

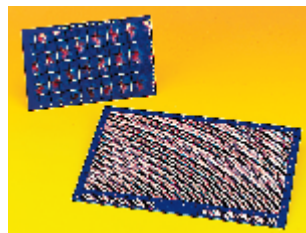
PCB133

| Mfrs. List No. | Order Code | Price Each | | | | |
|----------------|------------|------------|----|-----|-----|------|
| | | 1+ | 5+ | 10+ | 50+ | 100+ |
| RE200HP | 823-417 | | | | | |
| RE200DS | 823-429 | | | | | |
| RE200 EPOXY | 823-430 | | | | | |
| RE200DS-EPOXY | 823-442 | | | | | |

Eurocard Prototyping Board

OKTOPAD™ single and double height

ROADRUNNER



- Single sided, single and double height
- Octagonal pads for design flexibility
- Can be used with Roadrunner, wire wrapping or discrete component wiring

| Specifications | |
|----------------------|-------------|
| Material | Epoxy glass |
| Board thickness | 1.6 |
| Connector pattern to | DIN41612 |
| Hole matrix | 2.54 x 2.54 |
| Hole size | 1.0 |

125

| | Order Code | Price Each | | | |
|---------------------------|------------|------------|----|-----|-----|
| | | 1+ | 5+ | 10+ | 20+ |
| Single height 160 x 100 | 967-397 | | | | |
| Single height 220 x 100 | 967-403 | | | | |
| Double height 160 x 233.4 | 967-415 | | | | |
| Double height 220 x 233.4 | 967-427 | | | | |