

OPT296

Mfrs. List No.	Order Code	Price Each			
		1+	25+	100+	1K+
Miniature					
OPB608B	139-830				
HOA1397-2	327-232				
SG-2BC	491-366				
HOA2498-2	491-573				
HOA2498-3	491-585				
HOA1180-2	491-421				
EE-SY171	567-700				
EE-SY113	567-711				
Standard					
OPB704	178-944				
HOA1405-2	327-244				
HOA1406-1	491-433				
EE-SB5	567-668				
EE-SB5-B	567-670				
EE-SF5	567-681				
EE-SF5-B	567-693				
EE-SY169A	567-735				

Card Key Fob	Order Code	Price Each
		1+
	620-907	
	620-919	

Ultra Violet Emitters

TO-46 Package, Flat and Domed Lens



CAUTION: Invisible Laser Radiation, precautions must be taken when operating. During operation the UV LEDs radiate intense UV light. Do not look directly into the UV light, as this can be harmful to the eyes even for very brief periods of time.



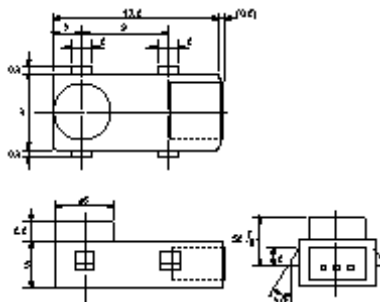
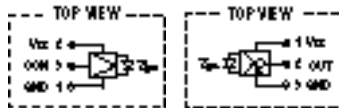
Optical Power	Viewing Angle	Peak Wavelength	Forward Voltage @ 10mA	Order Code
Flat Lens - Wide Viewing 1mW	110°	370nm	3.9V	335-1312
Domed Lens - Narrow Viewing 0.75mW	10°	370nm	3.9V	335-1324

OPT222

Separated Opto Switches

Matched Pair

KODENSHI



- Internally modulated infra-red LED and a matching photodetector mounted in separate compact housings with lenses
- May be used up to 100cm separation
- Electrical connection is made by integral connector
- Logic output detector will drive TTL circuits directly
- Integral light filtering and modulation provide immunity to ambient light
- May be used for sensing applications where wide separation is required at an economic cost
- May also be used in reflective mode with a very long range
- 3 way cable assembly for emitter and detector available, lead length - 30cm

Detecting distance: 100cm minimum @ Vcc 5V Switching speeds: 0.5mS
Power dissipation: 100mW maximum Operating temperature range: -10°C to +60°C

OPT555

Mfrs. List No.	Order Code	Price Each				
		1+	5+	10+	25+	50+
PIE-310/PIE-310D	139-865					
Cable assembly	310-0728					

Infra-Red Sensors

Infra-Red Detectors

ECS

Card/Key Fob



620-907 620-919
H = 53.0, W = 85.0, D = 1.0 H = 35.0, W = 58.0, D = 6.0

These infra-red detectors are efficient, easy to use and invaluable for checking all infra-red sources including remote controls, low power lasers, fibre optics and infra-red beams used in burglar alarms.

Position the active area about one centimetre from the infra-red source. If any infra-red light is being transmitted an orange glow will appear.

OPT373

Colour	Order Code	Price Each				
		1+	3+	5+	10+	25+
Flat Lens	335-1312					
Domed Lens	335-1324					

Emitters & Detectors

Infra-Red - 875nm Surface Mount and 5mm/T1 3/4



5mm/T1 3/4
L = 8.7 (body)
Lead pitch - 2.54, leads = 22.5 0.5sq
Cathode identified by shorter lead

Subminiature Surface Mount:
H = 2.16 (Flat top), 2.92 (Domed)
W = 2.04, D = 2.21
Overall width across leads (gull wing) = 3.81
Lead spacing (through hole) = 2.54, lead length = 10.42
Cathode identified by stripe on body

Light Output @ mA	Half Angle	Peak Wavelength	Switching t_r, t_f (µs)	Mfrs. List No.	Package	Order Code
Emitters - 5mm/T1 3/4						
38mW/sr @ 50	30°	875nm	0.4, 0.4	HSDL-4220	5mm/T1 3/4	942-406
75mW/sr @ 50	17°	875nm	0.4, 0.4	HSDL-4230	5mm/T1 3/4	942-649
Emitters - Flat Top Lens, Subminiature Surface Mount						
3mW/sr @ 50	110°	875nm	0.4, 0.4	HSDL-4400-011	Gull Wing	942-558
3mW/sr @ 50	110°	875nm	0.4, 0.4	HSDL-4400-1L1	Through Hole	942-560
Emitters - Domed Lens, Subminiature Surface Mount						
17mW/sr @ 50	24°	875nm	0.4, 0.4	HSDL-4420-011	Gull Wing	942-571
17mW/sr @ 50	24°	875nm	0.4, 0.4	HSDL-4420-1L1	Through Hole	942-583
Sensitivity λ @ 875nm	Half Angle	Peak Response	Response t_r, t_f (µs)	Mfrs. List No.	Package	Order Code
Detectors - Flat Top Lens, Subminiature Surface Mount						
0.5A/W	110°	875nm	0.75, 0.75	HSDL-5400-011	Gull Wing	942-595
0.5A/W	110°	875nm	0.75, 0.75	HSDL-5400-1L1	Through Hole	942-601
Detectors - Domed Lens, Subminiature Surface Mount						
0.5A/W	28°	875nm	0.75, 0.75	HSDL-5420-011	Gull Wing	942-613
0.5A/W	28°	875	0.75, 0.75	HSDL-5420-1L1	Through Hole	942-625

The HSDL-5400 series has an optical filter to reduce the effects of ambient light

OPT511

Mfrs. List No.	Order Code	Price Each				
		5+	25+	100+	500+	1K+
Emitters - 5mm/T13/4						
HSDL-4220	942-406					
HSDL-4230	942-649					
Emitters - Flat Top Lens, Subminiature Surface Mount						
HSDL-4400-011	942-558					
HSDL-4400-1L1	942-560					
Emitters - Domed Lens, Subminiature Surface Mount						
HSDL-4420-011	942-571					
HSDL-4420-1L1	942-583					
Detectors - Flat Top Lens, Subminiature Surface Mount						
HSDL-5400-011	942-595					
HSDL-5400-1L1	942-601					
Detectors - Domed Lens, Subminiature Surface Mount						
HSDL-5420-011	942-613					
HSDL-5420-1L1	942-625					

continued