

Piezo Audio Indicator



- A PCB mounting device with a low current consumption.
- Wave solderable and washable.

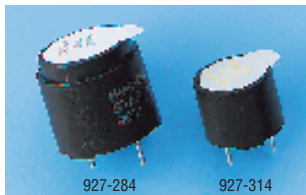
H = 13, Dia = 13.8,
Fixing centres 7.62,
Pin dia = 0.7

Voltage 12Vdc
Operating voltage 3-16 Vdc
Current consumption 8mA
Sound level 72dB @ 30cm
Operating temperature -20° to 60°C
Tone Continuous

ssw165X

Order Code	Price Each			
	1+	25+	50+	100+
561-010				

Electromagnetic Alarms – PCB Mounting



- A range of electromagnetic alarms in two case sizes
- Dip solderable and washable – remove sealing label after washing

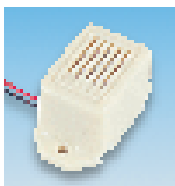


Order Code	927-284	927-296	927-302	927-314
Mfrs. List No	HMB06	HMB12	TMB05	TMB12
Operating voltage (V dc)	4-7	8-16	4-6.5	8-16
Current consumption (mA @ 12V)	27	25	22	15
Sound output @ 10cm (dB)	89	87	87	87
Operating Temperature (°C)	-40 +85	-40 +85	-40 +85	-40 +85
Weight (g)	5	5	2	2
Dimensions (DiaxHxPitchxpin dia)	16x14x7.6x0.7		12x9.5x7.6x0.6	

ssw291

Order Code	Price Each				
	1+	10+	25+	50+	100+
927-284					
927-296					
927-302					
927-314					

Mini Buzzers — 6V & 12V



H = 15.6, W = 33.2, D = 15.5
Fixing centres = 27.5 2.2 Dia.



H = 15.6, W = 23.0, D = 16.6
2 PCB Pins 1 Dia @ 7.6 cntrs.
Pin length = 6.0

- Single sound miniature buzzer for use in process control, safety, and industrial applications.

Note: The buzzer must be firmly fixed to a rigid base to give optimum performance.

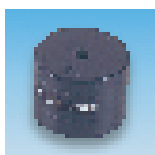
Voltage	6 or 12V dc	Connections	Red +ve, Black -ve
Current	25mA	Lead length	100mm
Frequency	400Hz ±50Hz	Operating temperature	-40°C to +70°C
Sound level @ 300mm	75dB(A)		

ssw30X

Voltage	Order Code	Price Each			
		1+	10+	50+	250+
With Leads					
6V	.449-064				
12V	.449-076				
PCB Mounting					
6V	449-088				
12V	449-090				

Miniature Buzzer — 5V to 16V

PCB Mounting



- High efficiency buzzer with a wide operating voltage
- ABS Plastic housing - base sealed with epoxy, top is tape sealed
- Compact and lightweight ideally suited to portable battery equipment

Note: Housing should be free to vibrate for correct operation.

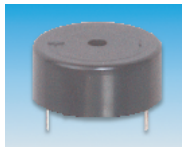
H = 17.5, Dia. = 23, PCB Mounting = 15 1 Dia. Pin length = 5.0

Operating voltage range 5V to 16V dc
Current consumption 10mA max.
Frequency 2.9kHz
Sound level @ 1m 77dB (A) @ 12V dc
Connections via PCB pins, polarity marked on housing
Operating temperature -20°C to +70°C

ssw32X

Order Code	Price Each					
	1+	25+	50+	100+	250+	500+
106-596						

Piezo Audio Indicator



- PCB mounting device with low current consumption.

Rated voltage 12Vdc
Operating voltage 3-20Vdc
Sound pressure level 90db @ 30cm
Max current consumption 10mA
Tone Continuous
Operating temperature -20 to 60°C

H = 16.5, Dia = 23.5,
Fixing centres = 17.5, Pin Dia = 0.8

ssw166X

Order Code	Price Each			
	1+	25+	50+	100+
561-060				

Piezo Alarms



- General purpose continuous tone piezo alarm
- Built in drive circuit
- High sound pressure level with a low current consumption



Order Code	927-259	927-260	927-235	927-247
Mfrs. List No	KPE-222	KPE-232	KPE-228	KPE-238
Rated voltage (V dc)	3-20	3-20	3-20	3-20
Current consumption (mA @ 12V)	13	13	12	12
Sound output @ 30cm (dB Typ)	75	75	82	82
Operating Temperature (°C)	-20 +60	-20 +60	-30 +85	-30 +85
Weight (g)	5	5	1.2	1.2
Dimensions (DiaxHxFCxpin dia.)	23.8x9.8x15x0.8	23.8x9.8x17.5x0.8	24x8.5x15x0.8	24x8.5x15x0.8

ssw288

Order Code	Price Each				
	1+	10+	25+	50+	100+
927-259					
927-260					
927-235					
927-247					

Piezo Alarms



- General purpose continuous tone piezo alarm
- Built in drive circuit
- 24mm diameter alarms with 3 frequency options



Order Code	927-200	927-170	927-211	927-181	927-223	927-193
Mfrs. List No	KPE-202	KPE-202A	KPE-204	KPE-204A	KPE-206	KPE-208
Rated voltage (V p-p max)	3-20	3-20	3-20	3-20	3-20	3-20
Current consumption (mA @ 12V)	6	8	9	9	15	15
Sound output @ 30cm (dB Typ)	78	83	86	93	85	91
Oscillating Frequency (kHz)	2.9	2.9	3.4	3.4	3.8	3.8
Operating Temperature (°C)	-20 +60	-20 +60	-20 +60	-20 +60	-20 +60	-20 +60
Weight (g)	7	4.5	5	5	4	4
Dimensions (Dia x H x FC x pin dia)	23.8x16x15x0.8	23.8x16x15x0.8	23.8x16x15x0.8	23.8x16x15x0.8	24x18x15x0.8	24x17x15x0.8

ssw296

Order Code	Price Each				
	1+	10+	25+	50+	100+
927-200					
927-170					
927-211					
927-181					
927-223					
927-193					

Continued