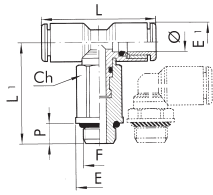


Push-In Fittings — continued

Tee Adaptor Technopolymer Miniature Push-In

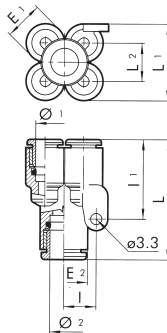


Mfrs. List No.	∅	F	Ch	P	L	L1	E	E1	Order Code
2L37001	4	M5	8	4	31.0	26.7	9	9.2	725-3734
2L37002	4	1/8	12	6	31.0	25.3	14	9.2	725-3746
2L37006	6	M5	8	4	34.2	27.8	9	11.3	725-3758
2L37007	6	1/8	12	6	36.2	30.9	14	11.3	725-3760
2L37008	6	1/4	14	8	36.2	33.2	18	11.3	725-3771
2L37009	8	1/8	12	6	38.6	32.1	14	13.8	725-3783
2L37010	8	1/4	14	8	38.6	34.4	18	13.8	725-3795

pne575

Order Code	1+	5+	10+	20+	50+
725-3734					
725-3746					
725-3758					
725-3760					
725-3771					
725-3783					
725-3795					

4 Way Adaptor Technopolymer Miniature Push-In

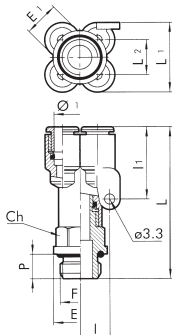


Mfrs. List No.	∅1	∅2	E1	E2	L	L1	L2	I	I1	Order Code
2L42001	4	4	9.2	9.2	28.8	17.9	8.7	8	21.3	725-3801
2L42002	4	6	9.2	11.3	31.3	17.9	8.7	8	21.3	725-3813
2L42004	6	6	11.3	11.3	33.4	22.6	11.3	9.5	25.6	725-3825
2L42005	6	8	11.3	14.0	34.8	22.6	11.3	9.5	25.6	725-3837

pne576

Order Code	1+	5+	10+	20+	50+
725-3801					
725-3813					
725-3825					
725-3837					

4 Way Adaptor Technopolymer Miniature Push-In

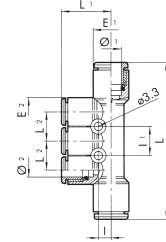


Mfrs. List No.	∅	F	E1	E	Ch	P	L	L1	L2	I	I1	Order Code
2L43001	4	M5	9.2	8	9	4	35.5	17.9	8.7	8	21.3	725-3849
2L43002	4	1/8	9.2	14	12	6	41.6	17.9	8.7	8	21.3	725-3850
2L43003	4	1/4	9.2	18	14	8	44.6	17.9	8.7	8	21.3	725-3862
2L43008	6	1/8	11.3	14	12	6	43.7	22.6	11.3	9.5	25.6	725-3874
2L43009	6	1/4	11.3	18	14	8	46.7	22.6	11.3	9.5	25.6	725-3886

pne577

Order Code	1+	5+	10+	20+	50+
725-3849					
725-3850					
725-3862					
725-3874					
725-3886					

4 Way Adaptor Manifold Technopolymer Miniature Push-In

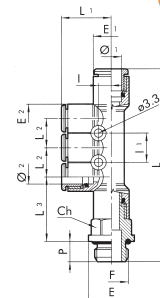


Mfrs. List No.	∅1	∅2	E1	E2	L	L1	L2	I	I1	Order Code
2L44001	6	4	11.3	9.2	53.2	17.2	9.4	4.3	9.4	725-3898
2L44003	8	6	14.0	11.3	61.4	19.6	11.5	5.0	11.5	725-3904

pne578

Order Code	1+	5+	10+	20+	50+
725-3898					
725-3904					

4 Way Adaptor Technopolymer Miniature Push-In



Mfrs. List No.	F	∅1	∅2	E1	E2	E	L	L1	L2	L3	I	I1	Order Code
2L45001	1/8	6	4	11.3	9.2	14	63.5	17.2	9.4	21.5	4.3	9.4	725-3916
2L45002	1/4	6	4	11.3	9.2	18	66.5	17.2	9.4	22.5	4.3	9.4	725-3928
2L45008	1/4	8	6	14.0	11.3	18	75.6	19.6	11.5	25.4	5.0	11.5	725-3930
2L45009	3/8	8	6	14.0	11.3	22	77.2	19.6	11.5	26.0	5.0	11.5	725-3941

pne579

Order Code	1+	5+	10+	20+	50+
725-3916					
725-3928					
725-3930					
725-3941					

Function Fittings

Elbow Banjo Flow Regulator



Pneufit Banjo Assembly Regulating Out

pne105

O/D Tube (mm)	BSP Taper	Mfrs. List No.	Order Code	1+	10+	30+	50+
4	1/8	10TA00418	701-6554				
6	1/8	10TA00618	701-6566				
8	1/8	10TA00828	701-6578				
10	1/8	10TA01038	701-6580				
12	1/8	10TA01248	701-6591				