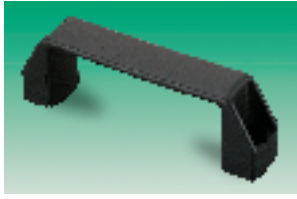


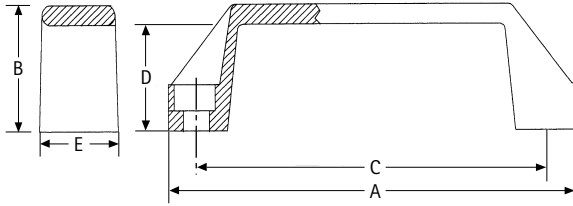
Handles — continued

Bridge



- Modern design
- High impact resistance

RENKOL



A	B	C	D	E	Thread/Bore
134	41	117	34.5	26	8.5

stc44

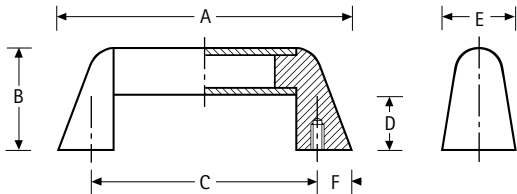
Mftrs. List No.	Order Code	1+	10+	20+	50+	100+	200+
T1480	700-7371						

Bridge



- Ideal if non-standard handle lengths are needed
- Very strong with good lifting capacity

RENKOL



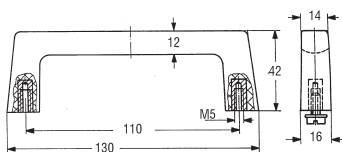
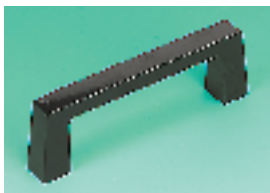
A	B	C	D	E	F	Thread or Bore	Mftrs. List No.	Order Code
182	45	152	25	30	15	M6	1154/6	700-2210
335	45	305	25	30	15	M6	1154/121	700-2221

stc181

Order Code	1+	25+	50+	100+	200+	500+
700-2210						
700-2221						

Bridge, Plastic

High Temperature Stability



- Ergonomic styling black plastic
- High temperature stability 100°C
- M5 threaded insert
- Supplied with fixing hardware

Carrying capacity 35kg

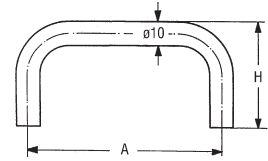
H300

Order Multiple=2	Mftrs. List No.	Order Code	2+	10+	20+	40+
	267.13	305-7100				

Round Plastic



MENTOR



- Manufactured from black thermoplastic
- High gloss finish
- Supplied with fixing hardware

Carrying capacity 50kg

H304

Order Multiple=2

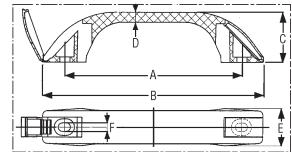
Fixing Centres (A)	H	Mftrs. List No.	Order Code	2+	10+	20+	40+
64	32	3244.1643	306-1220				
128	35	3244.1388	306-1243				

Plastic



MENTOR

- Black polyethylene carrying handle
- Integral screw covers to provide flush finish
- Not supplied with fixing screws

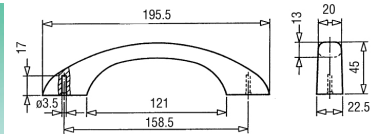


A	B	C	D	E	F	Screw Size	Mftrs. List No.	Order Code
66.5	83.2	18.7	3.7	13.7	3.2	M3	3044.0665	861-340
89.9	112.5	25.2	5	18.6	3.2	M3	3044.0899	861-352
112	140	31.5	6.3	23.2	4.2	M4	3044.1120	861-364
138	174	38.7	7.7	29	5.2	M5	3044.1380	861-376

H223

Fixing Centres	Order Code	1+	10+	20+	40+
66.5	861-340				
89.9	861-352				
112	861-364				
138	861-376				

Carrying



- Attractive design
- Matt black polypropylene
- Fixings should be ordered separately

Carrying capacity 40kg

H319

Mftrs. List No.	Order Code	1+	10+	20+	40+
3045.1660	306-1267				

Equipment



MENTOR

