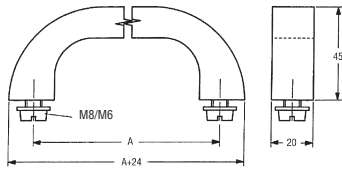
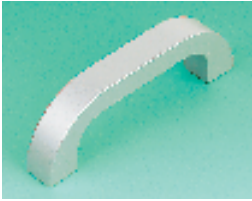


## Equipment Heavy Duty



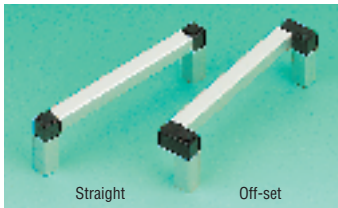
- Solid ergonomic design
- Natural/black anodised aluminium
- Supplied with fixing hardware M6 (120mm handle) M8 (140mm handle)

Carrying capacity 100kg

H287

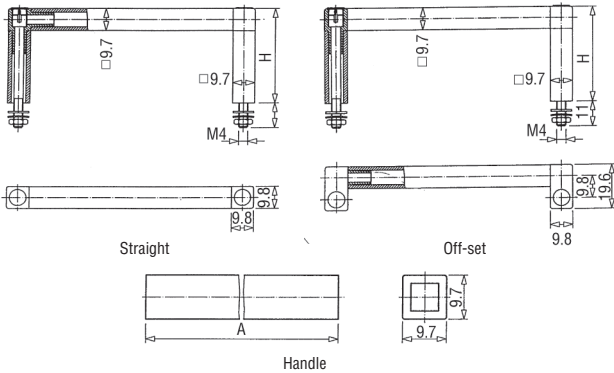
Colour	Fixing Centres (A)	Mfrs. List No.	Order Code	Price Each			
				1+	5+	10+	20+
Natural	120	3312.1201	<b>306-0913</b>				
Natural	140	3312.1401	<b>306-0925</b>				
Black	120	3312.1203	<b>306-0937</b>				
Black	140	3312.1403	<b>306-0949</b>				

## Modular, Aluminium



Straight

Off-set



Straight

Off-set

Handle

- Natural or black anodised aluminium bars with ABS corners
- Legs are available either straight or off-set (sold as a pair)
- Suitable for machine cases and light carrying operators
- Supplied complete with fixing hardware

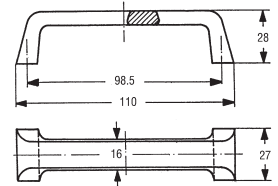
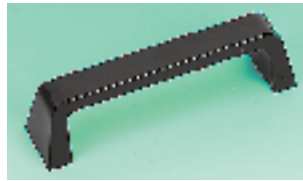
Carrying capacity 50kg

ORDER LEGS AND HANDLE SEPARATELY

H285

Colour	Length H or A	Mfrs. List No.	Order Code	Price Per Pair			
				1+	5+	10+	20+
<b>Straight Leg (Pair)</b>							
Natural	32	3257.0321	<b>306-0093</b>				
Natural	42	3257.0421	<b>306-0100</b>				
Black	32	3257.0323	<b>306-0111</b>				
Black	42	3257.0423	<b>306-0123</b>				
<b>Off-set Leg (Pair)</b>							
Natural	32	3256.0321	<b>306-0135</b>				
Natural	42	3256.0421	<b>306-0147</b>				
Black	32	3256.0323	<b>306-0159</b>				
Black	42	3256.0423	<b>306-0160</b>				
<b>Handle</b>							
Natural	45.2	3256.0551	<b>306-0172</b>	1+	5+	10+	20+
Natural	78.2	3256.0881	<b>306-0184</b>				
Natural	90.2	3256.1001	<b>306-0196</b>				
Natural	110.2	3256.1201	<b>306-0202</b>				
Natural	1M	3256.0001	<b>306-0214</b>				
Black	45.2	3256.0553	<b>306-0226</b>				
Black	78.2	3256.0883	<b>306-0238</b>				
Black	90.2	3256.1003	<b>306-0240</b>				
Black	110.2	3256.1203	<b>306-0251</b>				
Black	1M	3256.0003	<b>306-0263</b>				

## Carrying



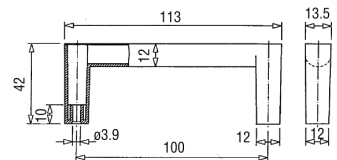
- Gloss black thermoplastic
- Practical design
- Fixings should be ordered separately

FOR SUITABLE NO 8 SELF TAPPING FIXING SCREW SEE PAGE 701

H318

Mfrs. List No.	Order Code	Price Each			
		1+	10+	20+	40+
281.1	<b>306-1279</b>				

## Thermoplastic



- Black thermoplastic
- Aluminium self adhesive Décor strip available (natural aluminium or black anodised)
- Supplied with M3.5 fixing hardware

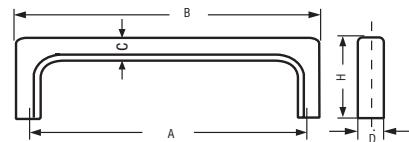
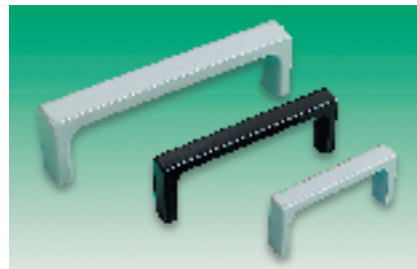
Mfrs. List No: 3315.1003 = 306-0676, 3315.0011 = 306-0688, 3315.0031 = 306-0690

HANDLE AND DÉCOR STRIP SHOULD BE ORDERED SEPARATELY

H289

Order Multiple=2	Order Code	Price Each			
		2+	10+	20+	40+
Handle	<b>306-0676</b>				
Décor Strip, Aluminium	<b>306-0688</b>				
Décor Strip, Black	<b>306-0690</b>				

## ABS



- High quality
- Abrasive resistant
- Temperature stability between -25°C and 70°C
- Good chemical stability
- High loading capacity
- Resistant to light, weather and aging
- Suitable for equipment housings
- Supplied with fixing screws and washers

Colour	A	B	C	D	H	Mfrs List No.	Order Code
Black	66.5	75	8	12	32	250.663	893-651
Black	101.5	110	9	13	36	250.1003	861-145
Black	138	155	13	20	42	250.1393	861-157
Grey	66.5	75	8	12	32	250.664	861-169
Grey	101.5	110	9	13	36	250.1004	861-170
Grey	138	155	13	20	42	250.1394	861-182

H212

Colour	Fixing Centres	Order Code	Price Each			
			2+	10+	20+	40+
Black	66.5	<b>893-651</b>				
Black	101.5	<b>861-145</b>				
Black	138	<b>861-157</b>				
Grey	66.5	<b>861-169</b>				
Grey	101.5	<b>861-170</b>				
Grey	138	<b>861-182</b>				