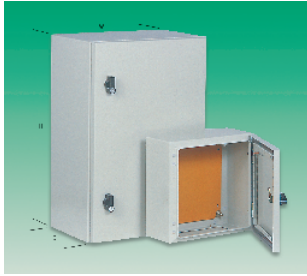


## Wall Mount — continued

### 3000 Series IP66 Steel

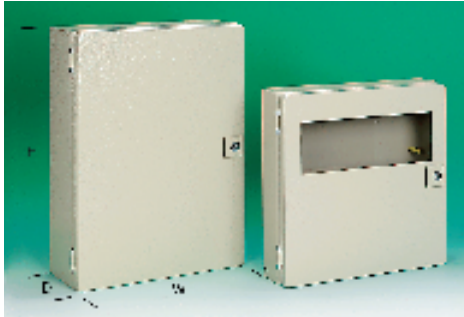


- Steel enclosures with polyurethane door seal
- Adjustable hinges, with one or two cylinder locks
- Finished in textured epoxy paint. (RAL7032)
- Fitted with earthing terminal and mounting plate fixings
- With gland plate and seal
- Orange steel chassis plates and mounting brackets available.
- Approvals: **UL, Bureau Veritas, CSA, Germanischer Lloyd, IMQ**

BOX38

Ext. Dimensions			Order Code	Price Each				
H	W	D		1+	5+	10+	25+	50+
<b>Enclosures</b>								
300	200	150	1	. 461-866				
300	300	150	1	. 650-730				
300	300	200	1	. 461-878				
400	300	150	1	. 461-880				
500	300	200	2	. 461-891				
300	400	150	1	. 461-908				
400	400	200	1	. 461-910				
500	400	200	2	. 461-921				
600	400	250	2	. 461-933				
500	500	250	2	. 461-945				
400	600	250	1	. 461-957				
600	600	250	2	. 650-742				
<b>Chassis Plate for :-</b>								
461-866	-	-	-	. 461-969				
461-878, 650-730	-	-	-	. 461-970				
461-880, 461-908	-	-	-	. 461-982				
461-891	-	-	-	. 461-994				
461-910	-	-	-	. 462-019				
461-921	-	-	-	. 462-020				
461-933, 461-957	-	-	-	. 462-032				
461-945	-	-	-	. 462-044				
650-742	-	-	-	. 650-778				
				Price Per Set				
				1+	5+	10+	25+	50+
<b>Mounting Brackets (Set of 4)</b>				462-068				

### Terminal Boxes - 'EB' IP66, Steel



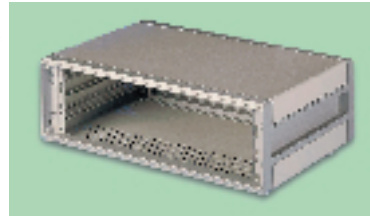
- Compact enclosures with hinged door/lid. Finished in Grey RAL7032
- Supplied with quick fit steel mounting plate
- Integral cam lock provides protection in accordance with **VDE 0660 Pt 500**
- Bus enclosures have makrolon window and DIN rail instead of mounting plate
- Protected to **IP66 EN60529/10.91**
- **UL, CSA, TUV, Germanischer Lloyds, Lloyds Register of Shipping approved**

BOX203

Ext. Dimensions			Mfrs. List No.	Order Code	Price Each		
H	W	D			1+	10+	50+
<b>Standard Enclosure</b>							
150	150	80	EB1551	<b>879-228</b>			
300	150	80	EB1545	<b>879-162</b>			
200	200	80	EB1546	<b>879-174</b>			
300	200	80	EB1552	<b>879-230</b>			
400	200	80	EB1547	<b>879-186</b>			
150	150	120	EB1553	<b>879-241</b>			
300	150	120	EB1548	<b>879-198</b>			
200	200	120	EB1549	<b>879-204</b>			
300	200	120	EB1554	<b>879-253</b>			
400	200	120	EB1550	<b>879-216</b>			
300	300	120	EB1555	<b>879-265</b>			
400	300	120	EB1556	<b>879-277</b>			

## 19" Rack & Eurocard Frames

### 19" Instrument 'Diplomat'



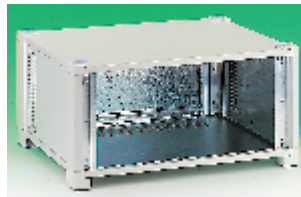
- Assembled cases for direct mounting of 482.60mm (19") Sub-racks and chassis
- Conform to **IEC297-1** and **DIN41494**
- Quick release top and bottom covers
- Optional front trims conceal 482.60mm (19") fixings

**NOTE:** Chassis supports must be ordered when fitting a chassis tray

BOX245

Height	Depth	Mfrs. List No.	Order Code	Price Each			
				1+	5+	10+	25+
<b>Cases</b>							
3U	422	760-236563B	<b>160-076</b>				
4U	422	760-236566G	<b>160-088</b>				
6U	422	760-236569A	<b>160-090</b>				
9U	522	760-236572A	<b>160-106</b>				
<b>Anodised Aluminium Front Panels</b>							
3U	-	60-39268L	<b>160-118</b>				
4U	-	60-39269G	<b>160-120</b>				
6U	-	60-39270E	<b>160-131</b>				
<b>Front Bezel Trims</b>							
3U	-	760-236865H	<b>160-143</b>				
4U	-	760-236866F	<b>160-155</b>				
6U	-	760-236867D	<b>160-167</b>				
9U	-	760-236868B	<b>160-179</b>				
<b>Ventilated Rear Panels</b>							
3U	-	760-236872L	<b>160-180</b>				
4U	-	760-236873J	<b>160-192</b>				
6U	-	760-236874G	<b>160-209</b>				
9U	-	760-236875E	<b>160-210</b>				
<b>Chassis Supports - PK 2</b>							
3U, 4U, 6U	-	60-43797D	<b>160-222</b>				
9U	-	60-43798L	<b>160-234</b>				
<b>Chassis Tray</b>							
3U, 4U, 6U	-	60-43803D	<b>160-246</b>				
9U	-	60-43804L	<b>160-258</b>				

### Instrument Cases - 'Verotec' (10.5" x 19") Vented



- Vented cases finished in grey powder coated paint (RAL7035)
- Feet and covers moulded in fire extinguishable ABS to **UL94V-0**
- Designed with no fixings visible
- Accept 19", eurocard and metric equipment with appropriate accessories

BOX252

Basic Cases	Mfrs. List No.	Order Code	Price Each		
			1+	5+	10+
1U 10.5"	260 70-133201C	<b>335-058</b>			
1U 19"	300 70-133202L	<b>335-060</b>			
2U 10.5"	260 70-133203H	<b>335-071</b>			
2U 19"	300 70-133204E	<b>335-083</b>			
3U 10.5"	300 70-133209A	<b>335-095</b>			
3U 19"	400 70-133210B	<b>335-101</b>			

### Front and Rear Panels For 'Verotec' Cases



Front Panel

Rear Panel

- 2.5mm anodised front panels
- Rear panels are finished in grey with ventilated slots
- Corner trims allow fixings to be concealed when fitting a front panel