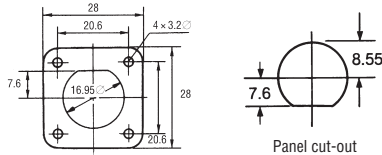
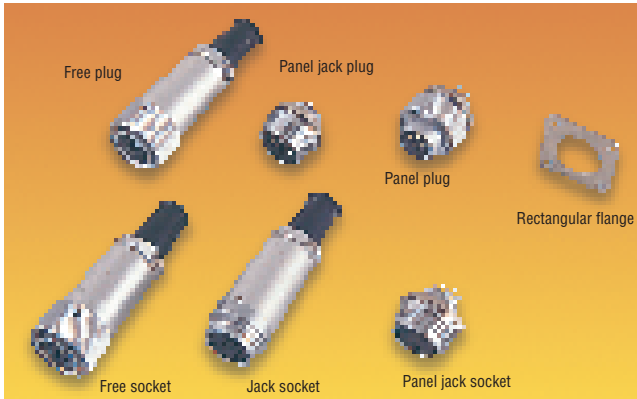


Professional Circular Connectors

RM15T Threaded Video 10 and 12 Pole 5A



10 and 12 pole circular connectors for video equipment applications. These connectors use solder terminations and have thread coupling lock mechanisms. An Allen Key, Order Code 109-226 is required to release the free plugs and sockets. A rectangular flange is available to simplify panel mounting.

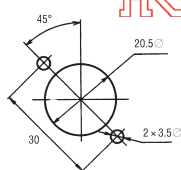
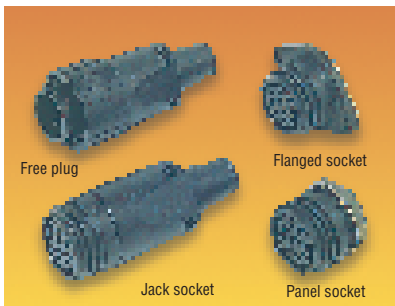
Current rating	5A	Housing	Aluminium alloy
Operating voltage	350V ac to 490V dc	Insulators	Diallyl phthalate, UL94V-0
Withstand operating voltage	1000V ac	Contacts	Brass, silver plated
Contact resistance	14mΩ max @ 1A dc	Pin	CDA alloy silver plated
Max cable entry	8.0mm	Socket	

Mfrs. List No.	RM15TPD 10P = 147-054,	RM15TPD 12P = 147-055,	RM15TRD 10P = 147-058,
	RM15TRD 12P = 147-060,	RM15TPRG 10P = 147-059,	RM15TPD 10S = 147-052,
	RM15TPD 12S = 147-053,	RM15TJD 10S = 147-061,	RM15TJD 12S = 147-062,
	RM15TRD 10S = 147-056,	RM15TRD 12S = 147-057,	RM15TR-F = 211-977

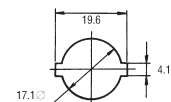
CA106

No. of Poles	Order Code	1+	50+	150+	250+
Free Plugs					
10	.147-054				
12	.147-055				
Panel Jack Plugs					
10	.147-058				
12	.147-060				
Panel Plug					
10	.147-059				
Free Sockets					
10	.147-052				
12	.147-053				
Jack Sockets					
10	.147-061				
12	.147-062				
Panel Jack Sockets					
10	.147-056				
12	.147-057				
Rectangular Flange					
	211-977				

RM215T Plastic Threaded Video 10 Pole 5A



Panel cut-out for 211-941



Panel cut-out for 211-953

Crimped video connectors with reinforced polycarbonate bodies. Fully compatible with the RM15T range, they offer the benefit of reduced weight and lower cost with an attractive matt black finish.

Crimp contacts for wire size 20-24 AWG are available separately in packs of 100.

Current rating	5A	Housing	Glass filled polycarbonate UL94V-0
Operating voltage	333V ac	Insulators	Glass filled polycarbonate UL94V-0
Withstand operating voltage	1000V ac	Contacts	Silver plated, phosphor bronze
Contact resistance	7mΩ max @ 1A dc		
Max cable entry	8mm		

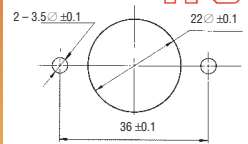
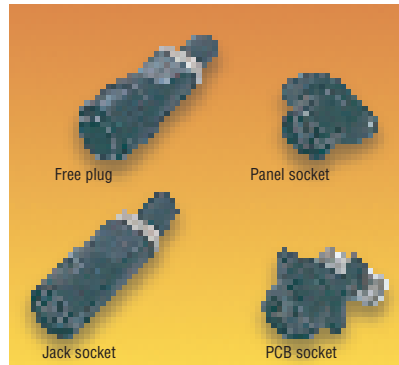
FOR SUITABLE CRIMP TOOL ORDER CODE 212-118

Mfrs. List No.	RM215TPA-10PC = 211-930,	RM215TR-10SC = 211-941
	RM215TRE-10SC = 211-953,	RM215TJA-10SC = 211-965

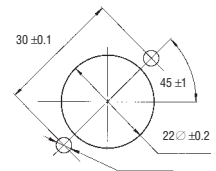
CA107

Order Code	1+	25+	50+	100+	250+
Free plug	.211-930				
Flanged panel socket	.211-941				
Panel socket	.211-953				
Jack socket	.211-965				
Price Per Pack					
Contacts (Pack of 100)	1+	5+	10+	50+	
Male	.211-916.				
Female	.211-928.				

RP5 Plastic Video 14 Pole



Panel cut-out for 211-886



Panel cut-out for 211-904

14 pin crimped circular connectors for VTR use with video cameras, mixing desks, tuners, etc. Manufactured in lightweight, robust black polycarbonate, the connectors incorporate a simple 'push-pull' latching mechanism for ease of use.

Crimp contacts for wire size 20-24 AWG are available separately in packs of 100.

Current rating	1A per contact	Housing	Glass filled polycarbonate UL94V-0
Operating voltage	300V ac	Insulators	Glass filled polycarbonate UL94V-0
Withstand operating voltage	900V ac	Contacts	Silver plated phosphor bronze
Contact resistance	7mΩ max @ 1A dc		
Max. cable entry	9.2mm		

FOR SUITABLE CRIMP TOOL ORDER CODE 212-118

Mfrs. List No.	RP5-19P-14PC(03) = 211-874,	RP5-19R-14SC(01) = 211-886
	RP5-19J-14SC(02) = 211-898,	RP5-19RB-14SR(01) = 211-904

CA108

Order Code	1+	10+	25+	50+	100+
Free plug	.211-874				
Panel socket	.211-886				
Jack socket	.211-898				
PCB socket	.211-904				
Price Per Pack					
Contacts (Packs of 100)	1+	5+	10+	50+	
Male	.211-916 .				
Female	.211-928 .				

Crimp Tool for RM215T and RP5 Video Connectors



- High quality, ratchet crimping tool
- Wire size 20-24 AWG.

CA109

Mfrs. List No.	Order Code	1+	5+	10+
RM-TC-11	.212-118			

continued